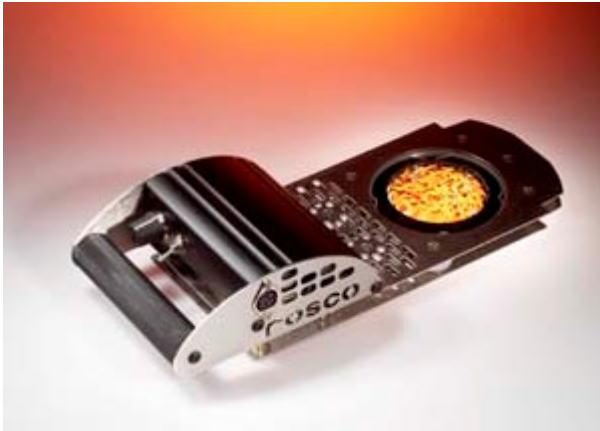


VORTEX 360™ Dual Rotator



The VORTEX 360 Dual Rotator is one of the most versatile accessories ever offered to lighting designers. And its incredibly low price makes it possible for any theatre or venue to have several copies available to cover any space or meet any need.

The sleek unit houses two carefully crafted gear drives, both made of stainless steel, to assure long term operation. A single silent motor drives both gear assemblies. Even at full speed, the VORTEX 360 Dual Rotator is so quiet it can be used anywhere in a theatre or venue - including front-of-house positions in a theatre or grids on low ceilings in restaurants or stores.

The VORTEX 360 Dual Rotator will fit the iris slot of the ETC Source Four, the Altman Shakespeare, Strand SL and the Selecon Pacific. It will accept standard B size (86 mm) steel or glass gobos.

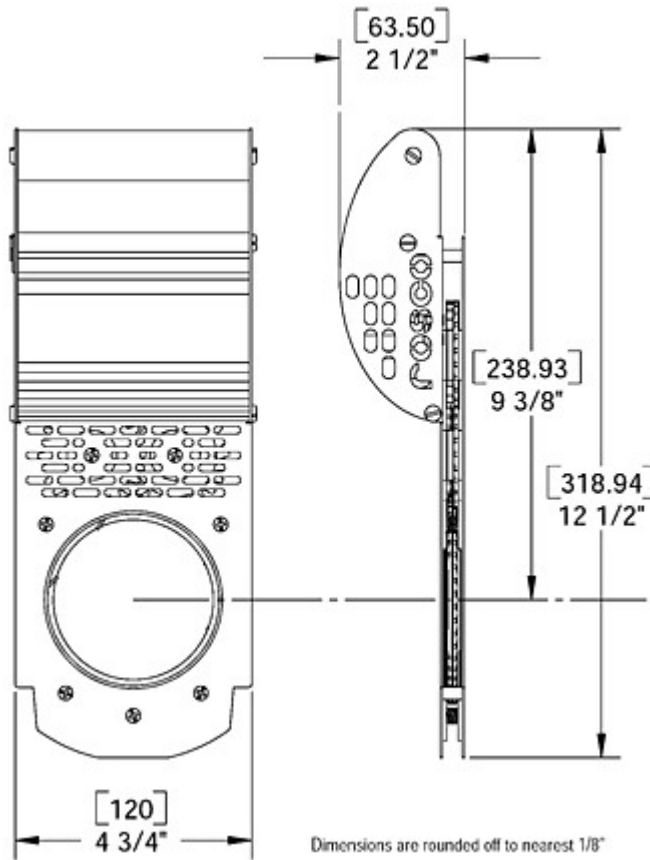
The VORTEX 360 is plug and play simple and requires no additional power supply to operate. A 12v transformer is included and can be plugged directly into a wall outlet.

The rotational speed of the VORTEX 360 can be adjusted by the simple potentiometer knob conveniently positioned on the top of the unit or by plugging the 12v transformer into an electronic dimmer capable of handling inductive loads. When powered through a dimmer, the operator can control the speed of rotation through the lighting control board. Please check with the dimmer manufacture before using the VORTEX in this fashion. Failure to use a compatible dimmer can result in overheating and/or damage to both the VORTEX and the dimmer.

The Vortex 360 includes a three-way toggle switch, discreetly located just under the handle. The switch allows your customers to turn the unit off and on and to control the direction of rotation. The front and rear gears rotate opposite each other - but the switch allows the user to determine whether the front or rear will operate clockwise.



Warning: Always attach a safety cable from the VORTEX to fixture housing.



Dimensions are rounded off to nearest 1/8"

Power

100-120VAC or 200-240VAC.
 50/60 hz - Plug in transformer,
 onboard, user selectable.
 Power Consumption: 200 mA.
 Power Cord: 52" (132 cm).

Weight

2 lbs., 12 oz.
 Transformer: 10 oz.

Speed

2-14 rpm

Motor Operating Temperature: 80°C.

Operational Conditions

Do not expose or position rotator in position which would subject it to excess heat from lamp housing of fixture. Damage to motor and gears can occur if exposed to excessive heat for long periods of time. Always drop rotator in fixture with motor housing to front of fixture, away from lamp housing.